

Lassen National Forest Discussion Draft Jonesville SE



Jul 27, 2007

System Roads and Trails

- Current Operational Maintenance Level**
- 0 - Not Maintained by FS, NO Public Right-of-Way
 - - - 1 - BASIC CUSTODIAL CARE (CLOSED TO ALL TYPES OF MOTOR VEHICLES)
 - 2 - HIGH CLEARANCE VEHICLES, Open to All Vehicles
 - 3/4/5 - Open to Street-Legal Vehicles Only
 - Roads Already Decommissioned
 - Roads Planned to be Decommissioned under other NEPA
 - NF System Trails - Open to Motorized Vehicle Use
 - NON-MOTORIZED TRAIL

- COUNTY ROAD Open to Street-Legal Vehicles Only
- STATE HIGHWAY Open to Street-Legal Vehicles Only

Proposed Designation

- - - OHV Trails Considered, Not Proposed
- Small Areas Open to Motorized Vehicle Use

For complete proposal symbology, see supplemental legend

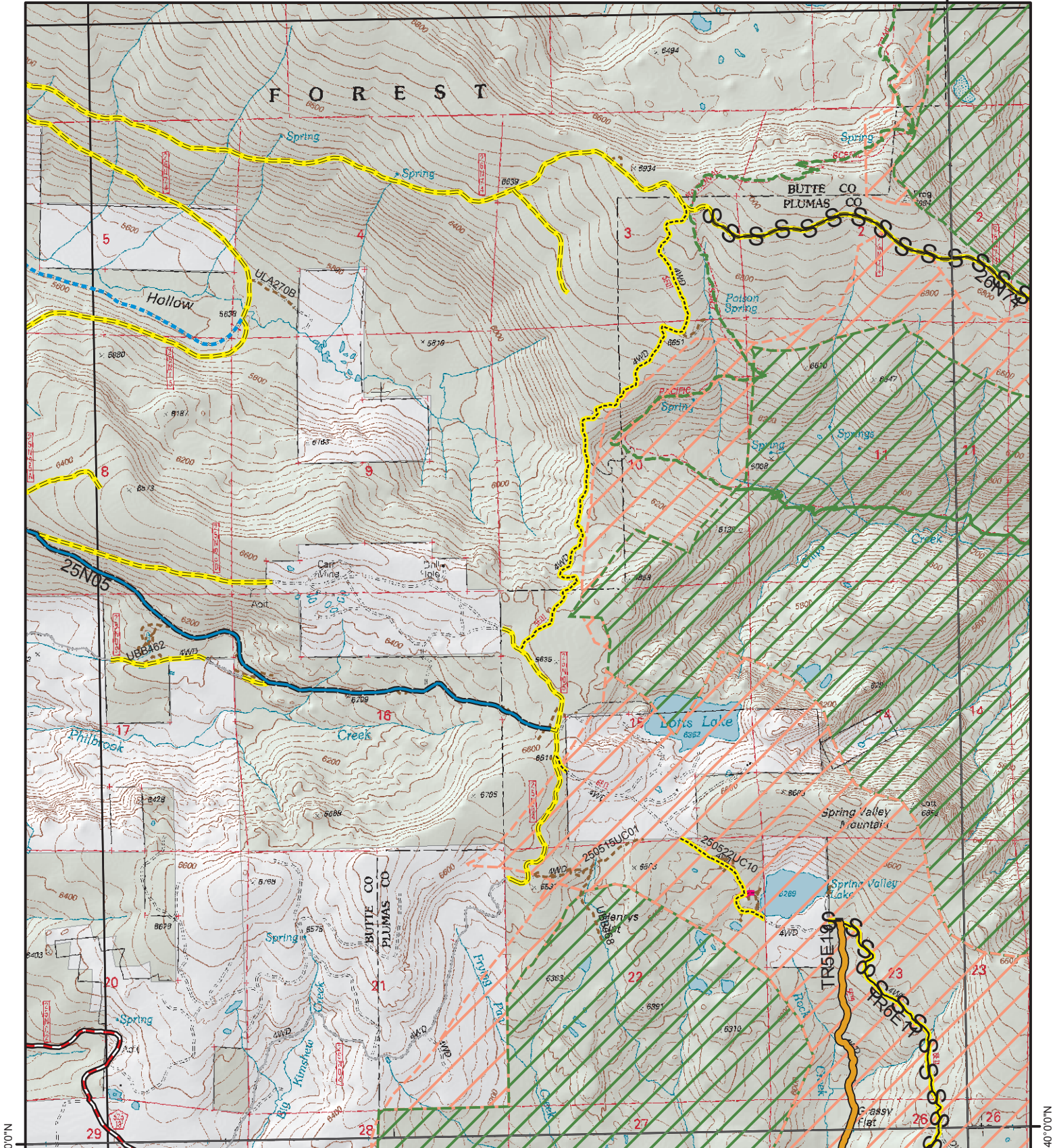
Planning Areas

- RESTRICTED to Designated Routes only
- PROHIBITED

- LAND OWNERSHIP**
- National Forest Land

0 0.25 0.5 1 Miles

121°22'30"W



40°00'N

40°00'N

121°22'30"W