

Lassen National Forest Route Inventory Map

Kimshew Point NE



Designated Roads and Trails OPERATIONAL MAINTENANCE LEVEL

- STATE
- COUNTY
- 0 - NO Right-of-Way
- 1 - BASIC CUSTODIAL CARE (CLOSED)
- 2 - HIGH CLEARANCE VEHICLES
- 3 - SUITABLE FOR PASSENGER CARS
- 4 - MODERATE DEGREE OF USER COMFORT
- 5 - HIGH DEGREE OF USER COMFORT
- NON-MOTORIZED TRAIL
- MOTORIZED TRAIL

Non-System Routes OBSERVED USE

- MOTORCYCLE
- ATV
- 4WD
- PASSENGER CAR
- UNDETERMINED

AREAS

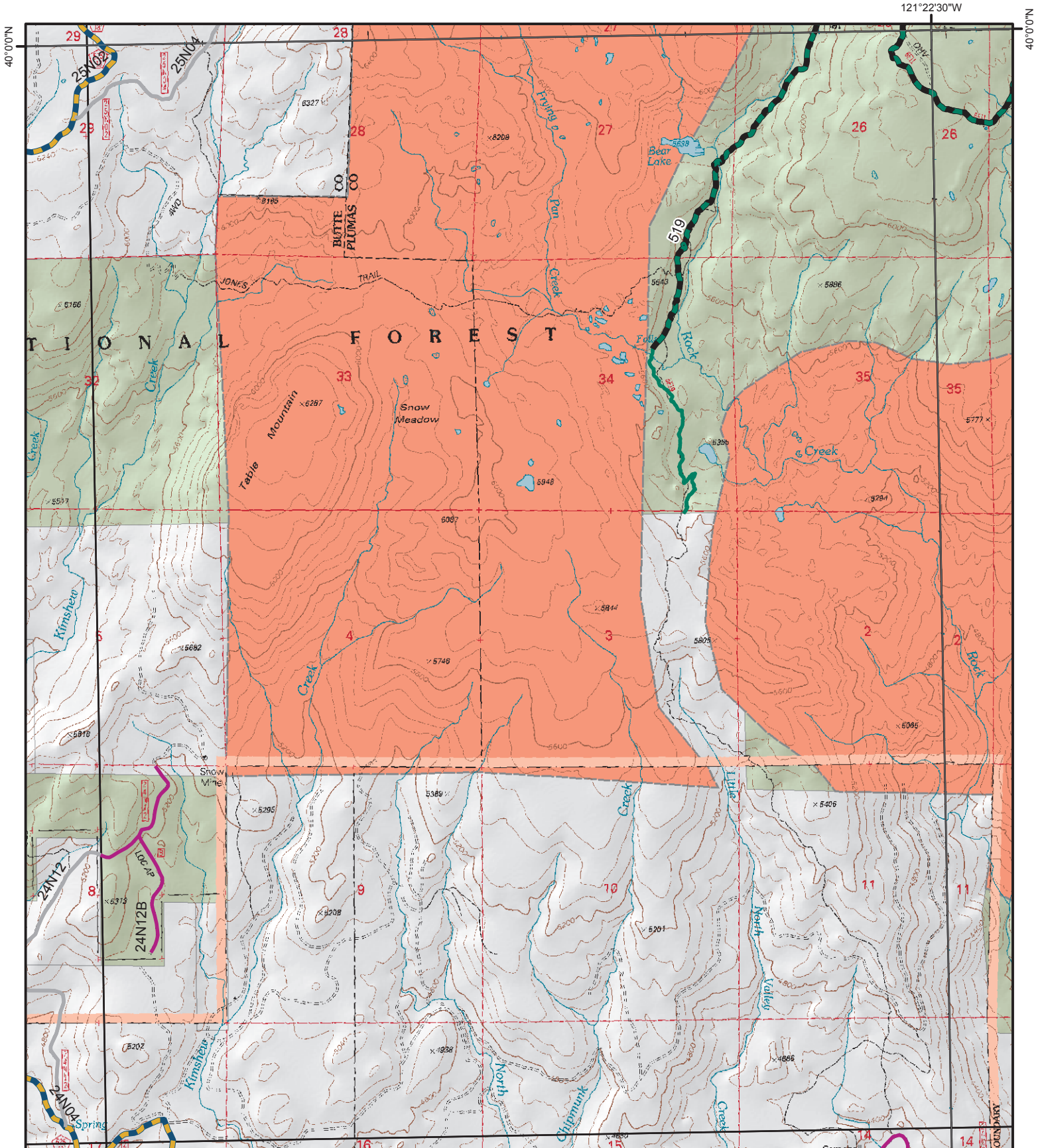
- OHV Use Areas
- Closed to Vehicles

LAND OWNERSHIP

- National Forest Land



Jun 08, 2007



121°22'30"W